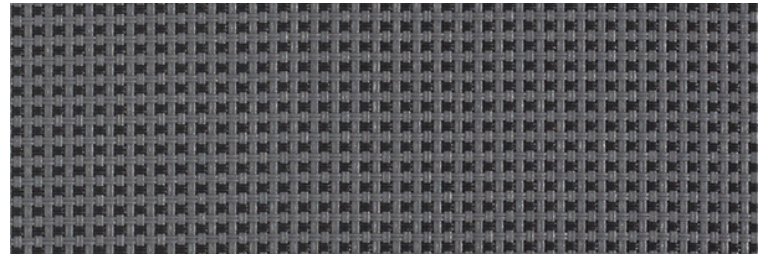


Carré 2165 | 108318 grey-black OF 5% Internal and external use

Fabric

Technical specifications	Average values	Standard
Thickness	0.58 mm	ISO/DIS 5084.2
Mass	540 g/m ²	ISO 3801
Yarns in warp/weft/cm	16/16	ISO 7211
Fire resistance	M1	NF P92-503
	FR	NFPA 701
		BS 5867
	B1	DIN 4102
Volatile organic compounds (VOC)	C-s3, d0	EN 13501-1
		DIBt (June 2004)
		AgBB (March 2008)
		AFSSET (2006)
	GREENGUARD	
	GREENGUARD Children & Schools	
Breaking strength	warp 290 daN, weft 310 daN	ISO 13934-1
Elongation at break	warp 4,4%, weft 6,6%	ISO 13934-1
Tear resistance	warp 8,9 daN, weft 7,1 daN	ISO 4674 part 1 method A
Colourfastness	7-8 scale of blue	ISO 105 B02
UV-resistance		ISO 150 B02
Air porosity	360 l/m ² /sec	ISO/DIS 9237
Cutting	cutting or ultrasonic	
Welding	HF, sewing, thermal, ultrasonic	
Cleaning	remove dust from the fabric surface, then wipe gently with a humid soft sponge while using a mild detergent	



Solar Heat & Light Control Properties

	Ts	Rs	As	Tv	TVdiff	TVdir	Tuv	Glare control
Both sides	5.4	16.0	78.6	4.2	0.8	3.4	3.7	Class 3

g_{tot}

	A		B		C		D	
	ext.	int.	ext.	int.	ext.	int.	ext.	int.
Values	0.22	0.63	0.17	0.62	0.11	0.52	0.09	0.29
Classes	2	0	2	0	3	0	4	2

Yarn

Technical specifications	Average values	Standard
Titer	165 tex	ISO 1889
Weighted composition	Glass 41,5%, PVC 58,5%	ISO 3801
Diameter	0.38 mm	
Environment	complies	Oekotex standard 100